

CLASSICAL MAKEDONIA PALACE



THESSALONIKI-GREECE



Classical means forEver

INSPIRED BY THE SPARKLE OF THE ANCIENT GREEK KINGDOM OF MACEDONIA, THE CLASSICAL MAKEDONIA PALACE, SUPERBLY RENOVATED, REVIVES HOSPITALITY IN A GRAND FASHION, WHILE THE CONSTANT SWIRL OF GUESTS ADDS TO THE HOTEL'S COSMOPOLITAN FLAIR.



GUESTROOMS & SUITES

- ★ 115 CLASSICAL GUESTROOMS ALL WITH MARBLE BATHROOMS, LUXURIOUS AMENITIES, BANG & OLUFSEN TV, INDIVIDUAL THERMOSTAT CONTROLLER
- ★ 145 DELUXE GUEST ROOMS (29 SQM - 40 SQM) ALL WITH MARBLE BATHROOMS, LUXURIOUS AMENITIES, BANG & OLUFSEN TV, INDIVIDUAL THERMOSTAT CONTROLLER
- ★ 21 DESIGNER SUITES (42 SQM - 98 SQM) ALL WITH MARBLE BATHROOMS, LUXURIOUS AMENITIES, INDIVIDUAL THERMOSTAT CONTROLLER, LCD TV, MINI I-PODS & I-POD STATION
- ★ 2 PRESIDENTIAL SUITES ALL WITH MARBLE BATHROOMS, LUXURIOUS AMENITIES, INDIVIDUAL THERMOSTAT CONTROLLER, LCD TV, MINI I-PODS & I-POD STATION, ONE OF THEM HAS PRIVATE MOVIE THEATRE

GUESTROOM & SUITES FACILITIES

- ★ SMOKING & NON SMOKING ROOMS
- ★ FREE WIRELESS INTERNET ACCESS AND VOICE MAIL
- ★ IN ROOM SAFE AND MAXIBAR
- ★ WORKING DESK AND DIRECT DIAL PHONE
- ★ SATELLITE & PAY TV
- ★ QUEEN SIZE BEDS, EXQUISITE DESIGNER FABRICS & DOWN COMFORTERS AND PILLOWS
- ★ 24-HOURS ROOM SERVICE

MISCELLANEOUS



- ★ CHECK IN AT 2 PM AND CHECK OUT AT NOON
- ★ LAUNDRY & DRY CLEAN SERVICES
- ★ HANDICAPPED-FRIENDLY GUESTROOM
- ★ MULTI-LINGUAL STAFF
- ★ BABY SITTING SERVICES UPON REQUEST
- ★ BUGABOO STROLLERS
- ★ STOKKE BABYCOTS
- ★ GOLD & GIFT SHOPS
- ★ PRIVATE PARKING
- ★ 24-HOURS CONCIERGE SERVICE

BUSINESS SERVICES

- ★ 24-HOURS BUSINESS CENTER
- ★ SECRETARIAL /TRANSLATION SERVICES
- ★ EXTENSIVE BANQUET SERVICES
- ★ CONFERENCE HALLS
- ★ LAPTOP & PRINTER AVAILABLE
- ★ AUDIOVISUAL EQUIPMENT, FAX, PRINTER, PHOTOCOPY MACHINE, POSTAGE

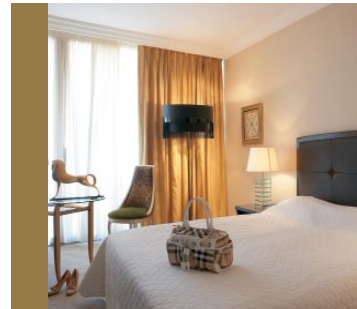
RECREATION



- ★ OUTDOOR POOL
- ★ WORKOUT & FITNESS AREA
- ★ HAIRDRESSER

GUESTROOM DESCRIPTIONS

CLASSICAL GUESTROOM



(AVG 28 SQM) THESE EXQUISITE GUESTROOMS WERE METICULOUSLY RESTORED DURING THE HOTEL'S RENOVATION AND ARE INDIVIDUALLY DESIGNED FOR LUXURIOUS COMFORT. UNIQUE PRIVATE MARBLE

BATHROOMS, A DESK AREA, A BALCONY WITH AN AMAZING VIEW OF THE CITY, AS WELL AS THE CHOICE OF QUEEN OR TWIN BEDS ALL ADD UP IN MAKING THESE ROOMS TRULY SUPERIOR!

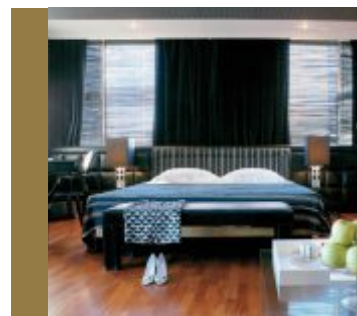
DELUXE GUESTROOM



(AVG 30 SQM) THE WARM EARTH TONES, THE OPULENCE OF THE FURNISHINGS AND DÉCOR, COMBINED WITH THE SEA'S SAPPHIRE COLOUR ALL REFLECT ELEGANCE AND EASE. THEY OFFER A KING OR

TWIN BEDS WHILE THE ULTIMATE LUXURY OF THE BATHROOM IS BOUND TO MAKE YOUR HOLIDAY DELUXE.

JUNIOR SUITES



(AVG 42 SQM) TREAT YOURSELF TO THE FINER THINGS IN LIFE BY STAYING IN ONE OF OUR JUNIOR SUITES WITH A CLASSICAL DÉCOR OF CREAMY EARTH TONES AND FINE TEXTILES DESIGNED BY RALPH

LAUREN. THESE SPACIOUS SUITES, WITH AN AVERAGE SIZE OF 40 TO 53 SQUARE METERS ARE FILLED WITH DAY LIGHT AND ARE CONSISTED OF A QUEEN SIZE BED, A WORKING DESK AND A SEATING AREA. THEY ALL HAVE BALCONIES WITH A MAGNIFICENT SIDE SEA VIEW, WHILST THREE OF THEM OFFER EXQUISITE FRONTAGE SEA VIEW.

GUESTROOM DESCRIPTIONS

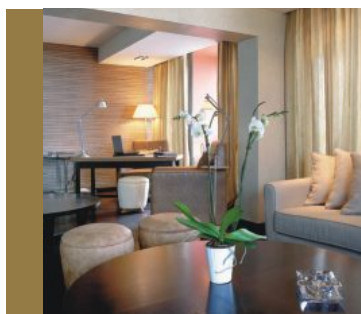
DELUXE SUITES



(AVG 60 SQM) THESE 7 SUITES ARE DECORATED IN A CLASSICAL CONTEMPORARY STYLE IN WARM EARTH COLOURS AND LUSH RALPH LAUREN'S TEXTILES. THESE LUXURIOUS ONE-

BEDROOM SUITES HAVE A SEPARATE LIVING ROOM AREA AND A WORKING DESK, THUS MAKING THEM A PERFECT SUITE FOR ENTERTAINING. THEY FEATURE A QUEEN SIZE BED AND AN ASTONISHING SEA VIEW FROM THEIR LARGE BALCONIES.

PRESIDENTIAL SUITE



(AVG 120 SQM- 135 SQM) THESE TWO UNIQUE PRESIDENTIAL SUITES «ALEXANDER » AND «PHILIP II », OFFER THE ULTIMATE IN LUXURY AND FINE QUALITY. WITH THEIR LARGE AND FURNISHED PANORAMIC

VIEW PRIVATE BALCONIES OVERLOOKING THE DEEP BLUE OF THE THERMAIKOS GULF AND THEIR SPACIOUS SEATING AREA, IT IS NO WONDER THEY ARE CONSIDERED TO BE THE JEWEL OF THIS LANDMARK HOTEL. THE PRESIDENTIAL SUITES INCLUDE ONE LARGE MASTER BEDROOM, ONE ADJACENT ROOM EQUIPPED WITH A DRESSING ROOM, A WRITING DESK AND BATHROOMS WITH A SEPARATE JACUZZI TUB ACCOMPANIED BY ETHEREAL OILS AND ONE OF THEM HAS A HALL CINEMA ROOM.

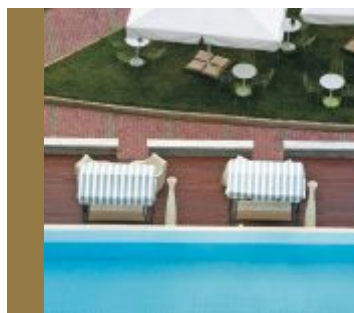
RESTAURANTS AND BARS

ALL DAY LOUNGE BAR



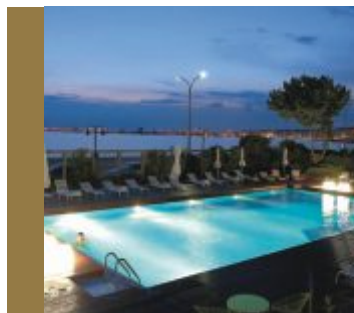
LOCATED IN THE LOBBY AREA, OFFERS AN EXCELLENT VARIETY OF HOT BEVERAGES, SNACKS AND SWEETS IN RELAXED SURROUNDINGS.

1 GARDEN CAFÉ



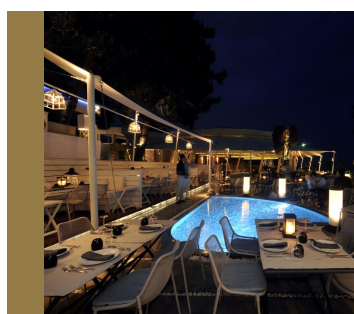
ENJOY THE SEA BREEZE AND OUR BEAUTIFUL GARDEN WITH A CUP OF COFFEE OR TEA.

2 SQUARE WATER



AFTER DINING IN THE OUTDOOR POOL ENJOY YOUR COFFEE. OR RELAX WHILE HAVING A REFRESHING DRINK BY THE POOL.

YACHT SALONS & RESTAURANT



DINE WHILE WATCHING THE SHIPS GO BY THE THERMAIKOS GULF . NO MATTER WHAT YOU'RE CRAVING, YOU'LL FIND SOMETHING TO DIVE IN YACHT SALONS & RESTAURANT

RESTAURANTS AND BARS

5 THE RESTAURANT



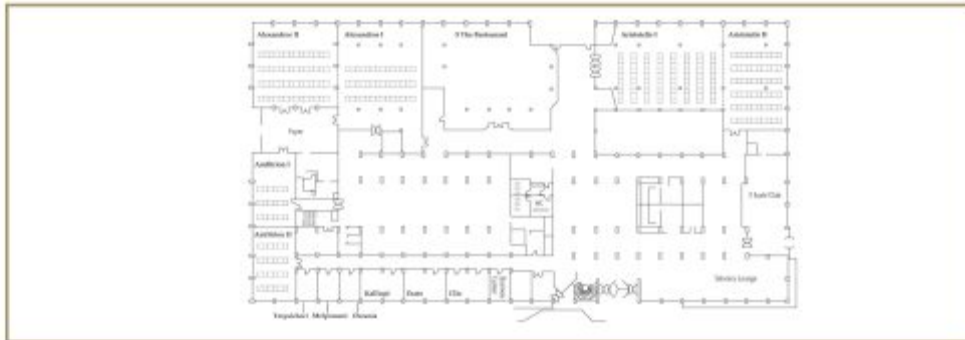
OFFERS MAGNIFICENT VIEW AND EXQUISITELY PREPARED MENUS FOR REFINED TASTES AND SUMPTUOUS GASTRONOMY.

9 CLOUD LEVEL



THE ROOFTOP 9 CLOUD LEVEL IS THE IDEAL LOCATION FOR BREATHTAKING VIEWS OF THE CITY'S NIGHT LIGHTS AND ROMANTIC SUNSETS. FOR EXCELLENT FUSION CUISINE WITH ASIAN INFLUENCES OR A COCKTAIL WITH DANCE MUSIC.

FLOORPLANS



BANQUET HALLS CAPACITIES

HALL	DIMENSIONS L*W*H	SIZE (m ²)	THEATRE	CLASSROOM	U/ SHAPE	COCKTAIL	BANQUET
Aristotelia	32 x 16 x 4	576	650	270	100	600	480
Aristotelia I	16 x 20 x 4	320	380	170	60	300	240
Aristotelia II	12 x 20 x 4	256	200	100	50	220	170
Alexandros	32 x 16 x 4	576	600	280	-	600	480
Alexandros I	16 x 20 x 4	344	350	130	60	300	240
Alexandros II	16 x 16 x 4	234	250	130	60	200	204
Amphitron	25 x 8 x 4	200	200	100	72	180	180
Amphitron I	12,5 x 8 x 4	101	100	50	36	90	70
Amphitron II	12,5 x 8 x 4	101	100	50	36	90	70
Olo	7,72 x 6 x 2,65	40	35	21	20	20	30
Erato	7,84 x 6 x 2,65	48	40	25	22	25	30
Kalliope	7,84 x 6 x 2,65	48	40	25	22	25	30
Quaria	3,86 x 6 x 2,65	20	15	9	9	-	12
Melpomeni	3,86 x 6 x 2,65	20	15	9	9	-	12
Terpsichori	3,86 x 6 x 2,65	20	15	9	9	-	12

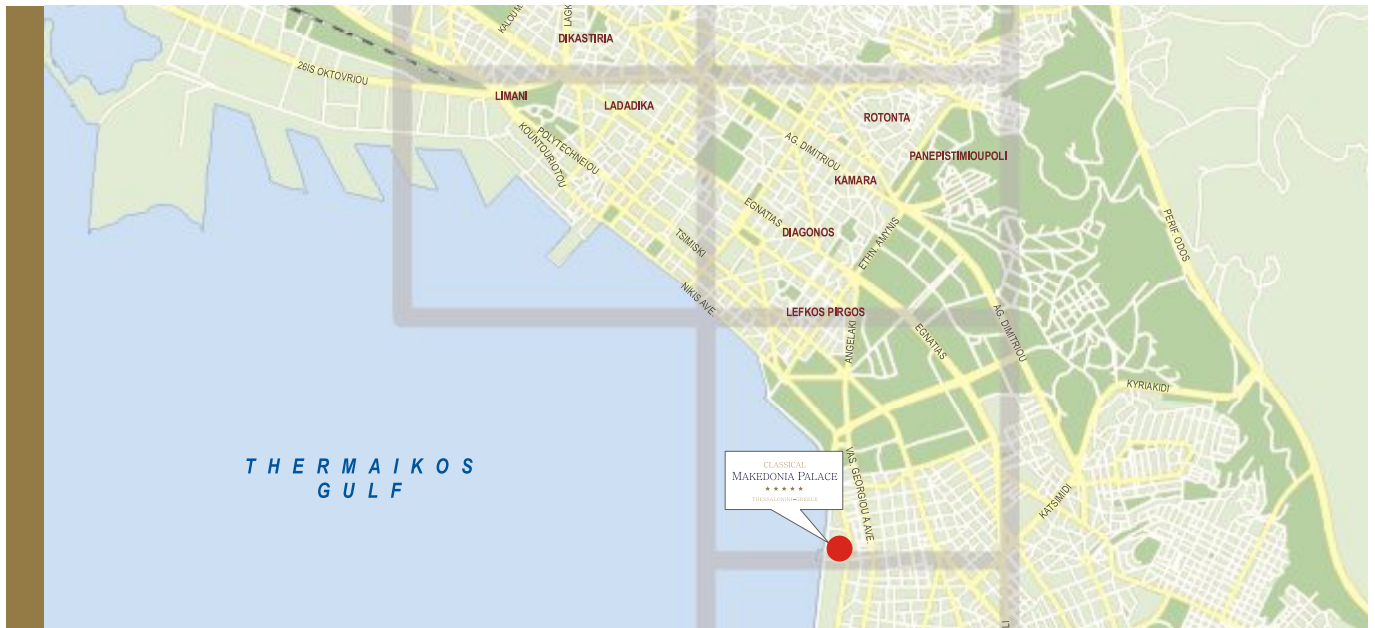


CLASSICAL
MAKEDONIA PALACE

★★★★★

THESSALONIKI-GREECE

LOCATION



THE HOTEL IS IDEALLY LOCATED BY THE SEA, ON THE MAIN CITY AVENUE AND OFFERS BREATHTAKING VIEWS OF THE CITY'S HISTORICAL WHITE TOWER AND THERMAIKOS GULF.

TRANSPORTATION

THESSALONIKI'S INTERNATIONAL AIRPORT MAKEDONIA IS IN A 15 KM DISTANCE.

BY BUS: TAKE BUS NO 78 JUST OUTSIDE THE AIRPORT TO BUS STATION FALIRO.

BY CAR: EXIT THE AIRPORT ON YOUR LEFT TO GEORGIKIS SCHOLIS STR. DRIVE STRAIGHT-AHEAD TO THE TOWN. THE STREET CHANGES NAME TO ETHNIKIS ANTISTASEOS AVE, VASSILISIS OLGAS AVE AND VASSILEOS GEORGIU AVE THAT BRING YOU TO THE WHITE TOWER. THERE YOU TURN SHARP LEFT TO MEG. ALEXANDROU AVE. CLASSICAL MAKEDONIA PALACE LIES ON YOUR RIGHT.

CLASSICAL HOTELS

THE FOURTEEN CITY HOTELS ALONG WITH FIVE FUTURE DEVELOPMENTS UNDER THE CLASSICAL BRAND, GUARANTEE AN UNSURPASSED LEVEL OF QUALITY AND LUXURY. WHETHER TRAVELING FOR BUSINESS, LEISURE, A CITY BREAK OR A COMBINATION OF THE THREE YOU WILL BE SURE TO FIND A CLASSICAL HOTEL THAT MEETS YOUR NEEDS.

CLASSICAL HOTELS ARE A PROUD MEMBER OF THE N. DASKALANTONAKIS GROUP OF COMPANIES.

FOR FURTHER INFORMATION OR RESERVATIONS PLEASE CONTACT

CLASSICAL MAKEDONIA PALACE

2, M. ALEXANDROU AVE. GR 546 40 THESSALONIKI GREECE

T+30 2310 897 197, F+30 2310 897 211

mkp@classicalhotels.com, reservations@classicalhotels.com

CLASSICAL
MAKEDONIA PALACE

THESSALONIKI-GREECE



Classical means forEver



www.classicalhotels.com